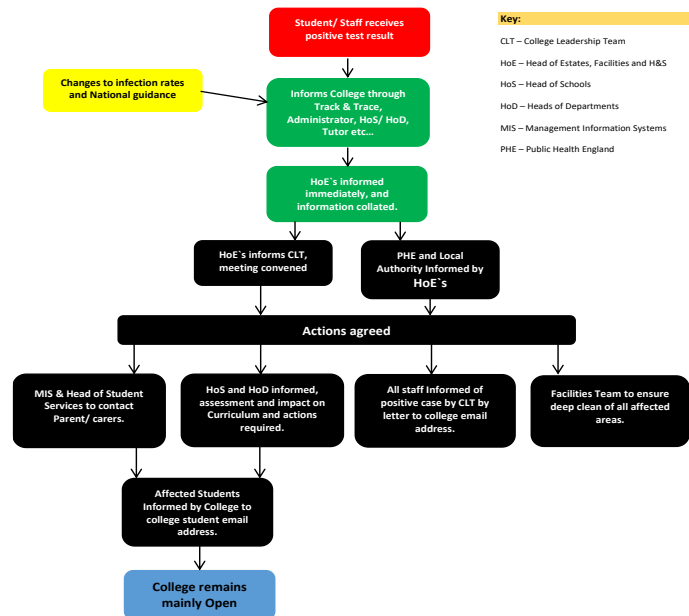


COVID-19 PROTOCOLS

COVID OUTBREAK TIERED CONTINGENCY PLAN

Tier 1



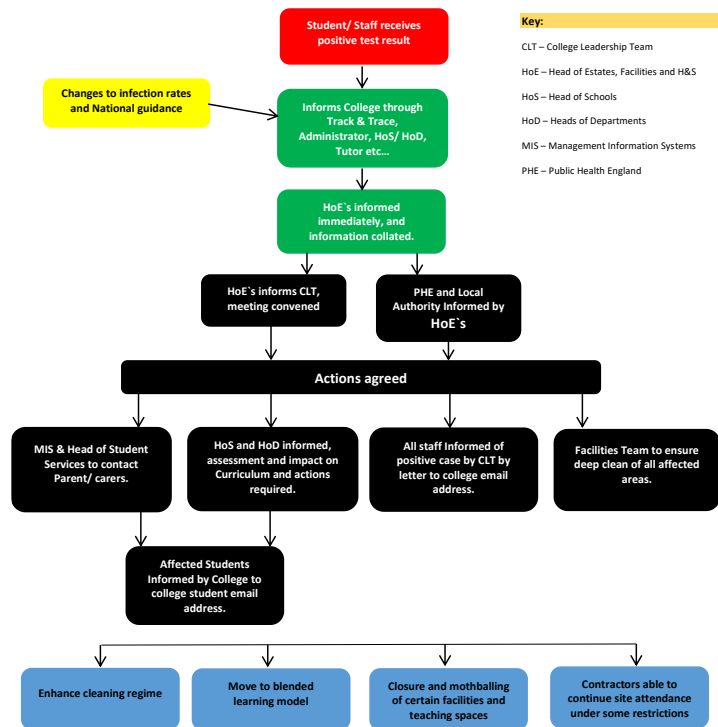
The default position for Richmond upon Thames College will be to remain open for an area moving into national intervention with restrictions short of education and childcare closure is described as 'tier 1'. There are no changes to provision and normal mitigating situations as identified in the risk assessment will be enacted.

- Social distancing of 2 metres (1 metre+ in classroom settings)
- Enhance cleaning regime across campus and practical hygiene controls in place for staff and students
- Procedures, information, and changes to advice communicated to all staff and students.
- Blended learning.
- Contractors able to continue with site attendance

The exceptions being of face coverings should be worn by adults and students when moving around the premises, outside of classrooms, such as in corridors and communal areas where social distancing cannot easily be maintained.

All students and staff and to attend, on site, with no other restrictions in place.

Tier 2

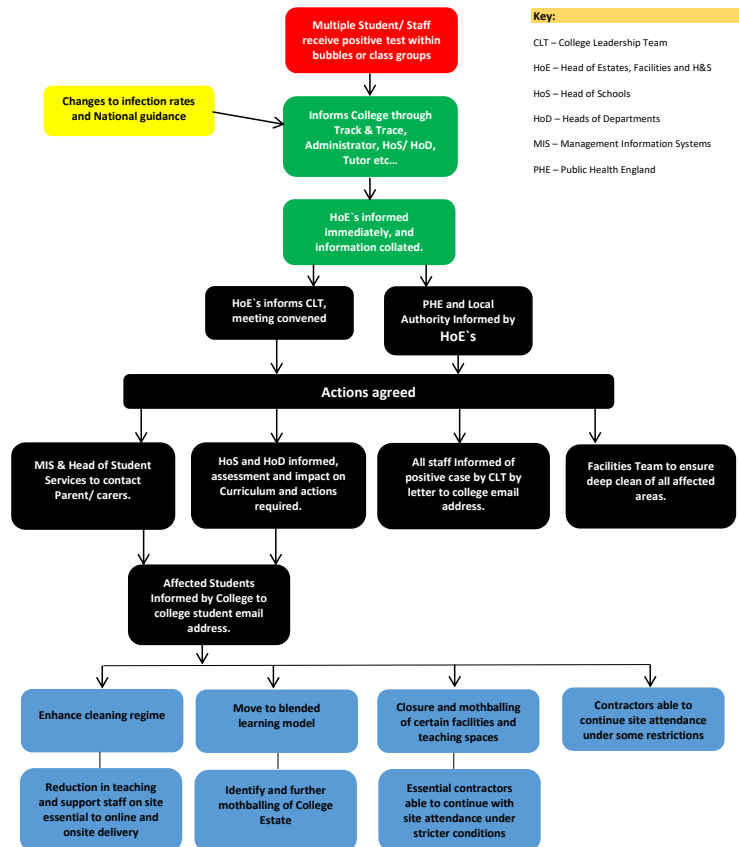


The college setting will continue to allow all students to attend on site and move to a rota model (blended learning), combining on-site provision with remote education. The College will continue to allow full-time attendance on site to vulnerable students and young people. All other students should not attend on site except for their rota time but the College retains the discretion to decide on a model that limits numbers on site.

All existing COVID provisions will continue to be enforced and face coverings should be worn by staff and students when moving around the premises, outside of classrooms, such as in corridors and communal areas where social distancing cannot easily be maintained.

- Social distancing of 2 metres (1 metre+ in classroom settings)
- Enhance cleaning regime across campus and practical hygiene controls in place for staff and students
- Procedures, information, and changes to advice communicated to all staff and students.
- Blended learning.
- Closure or mothballing of some facilities and classrooms
- Contractors able to continue with site attendance

Tier 3

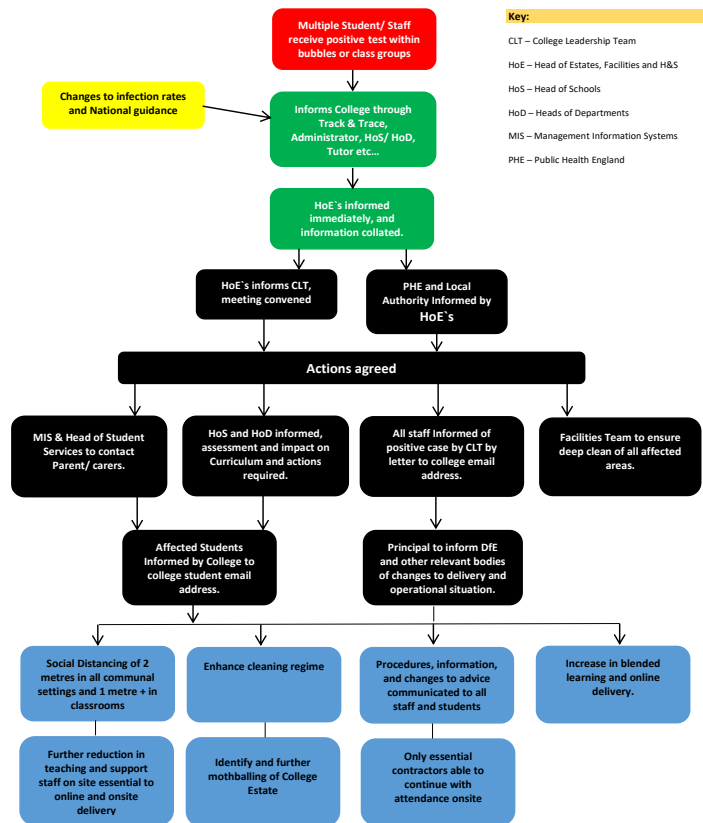


The College would allow full-time on-site provision only to those not in an identified bubble. Those students within the bubble of a confirmed case would be asked to stay at home and continue with remote delivery of teaching and learning.

For those remaining on-site in all settings face coverings should be worn by adults and students when moving around the premises, outside of classrooms, such as in corridors and communal areas where social distancing cannot easily be maintained.

- Social distancing of 2 metres (1 metre+ in classroom settings)
- Enhance cleaning regime across campus and practical hygiene controls in place for staff and students
- Procedures, information, and changes to advice communicated to all staff and students.
- Blended learning.
- Reduction in teaching and support staff to essential to the online and onsite delivery.
- Closure or mothballing of facilities and classrooms
- Contractors able to continue with site attendance

Tier 4



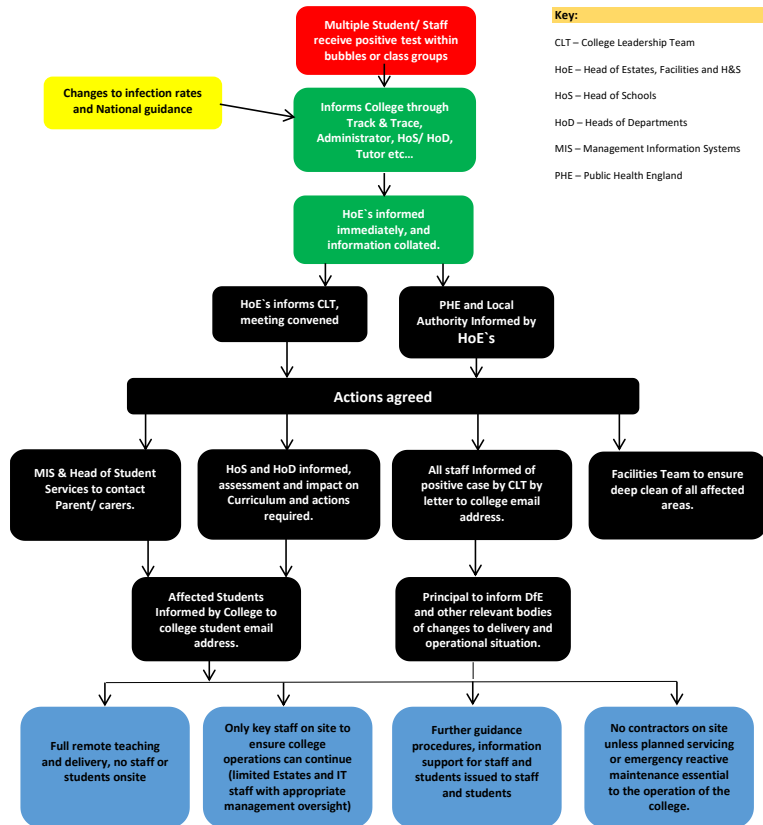
The College allow full-time attendance on site only to our priority groups: vulnerable students and the children of critical workers and selected groups (to be identified by Department for Education). All other students should not attend on site. Remote education to be provided for all other students.

In all settings face coverings should be worn by adults and students when moving around the premises, outside of classrooms, such as in corridors and communal areas where social distancing cannot easily be maintained.

- Social distancing of 2 metres (1 metre+ in classroom settings)
- Enhance cleaning regime across campus and practical hygiene controls in place for staff and students
- Procedures, information, and changes to advice communicated to all staff and students.
- Blended learning.
- Reduction in teaching and support staff to essential to the online and onsite delivery.
- Closure or mothballing of facilities and classrooms
- Contractors able to continue with site attendance for essential maintenance and works only.

Tier 5

The College will enact a full closure of the facilities with all learning being and support services completed remotely.



The College will enact a full closure of the facilities with all learning being and support services completed remotely.

Exceptional contingency reduced staffing of main building only for essential services and to maintain the campus estate and infrastructure and to support full remote learning.

Decision in this setting will be made by CLT in consultation with Chair of Governors, DfE, ESFA and PHE

- Key Estates and Technical staff
- IT Support Technician
- Appropriate Management oversight

In all settings face coverings should be continued worn by adults and students when moving around the premises, outside of classrooms, such as in corridors and communal areas where social distancing cannot easily be maintained.